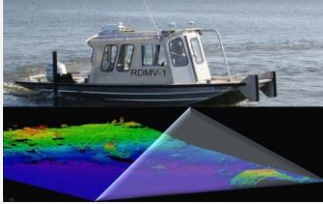


## iLinks RDMV



### VESSEL

- 26' V-Hull Workboat
- Twin Axel Road Trailer
- HONDA 250 HP 4-Stroke
- Dual 30 Gallon Fuel Tanks
- Full Marine Communications
- USCG Safety Equipment
- Utility Crane

### SURVEY EQUIPMENT

- R2sonic 2024 Multibeam
  - Truepix™
  - Snippets
  - Water Column Output
  - High Res Option
- Valeport SVP
- Valeport Sound Velocity Cast
- USM Precision Sonar Mount
- Single Beam Echosounder
- G-882 Magnetometer

### LIDAR EQUIPMENT

- iLinks IntelAST™ Mobile LiDAR

### POSITIONING EQUIPMENT

- Novatel IMU-CPT
- Fiber Optic Gyro
- Dual GNSS RTK Positioning
- Dual GNSS Heading
- 19" Rack Mounted I7 PC
- Dual 17" LED color monitors

### SOFTWARE

- Hypack
- QINSy
- iLinks Utilities Package

### POWER SOURCE

- Dual 1 kW UPS Inverters
- Dual Marine DC Batteries
- Battery Isolator Unit
- HONDA 60 Amp Alternator

**iLinks RDMV's are available for rent on a short or long-term basis – contact us for a quote.**

<http://www.ilinks.us/contact.html>

## Surveying the Mississippi river in flood

During the week of the 28th December 2015, iLinks were commissioned to conduct a detailed multibeam and side-scan sonar survey of a small section of the Mississippi river adjacent to Lutcher in the St. James Parish of New Orleans, Louisiana, USA.

Storms and unprecedented heavy rainfall were a common theme in December across the entire country and the week of the 28<sup>th</sup> in Louisiana was no exception. The Mississippi river was in full flood with a 7- 8 knot current flowing steadily.

Suitable launch sites for small survey vessels are few and far between on this particular section of the Mississippi and the ones that were normally marginally functional were either washed out or under water.

A 30 mile transit against an 7-8 knot current was not on the bucket list so the only option left was to seek assistance from the marine experts at Port Ship Services in Lutcher and get the survey vessel lifted



into the river. The survey was urgent and New Year celebrations were looming so getting on the water was a top priority.

iLinks operate a small fleet of rapid deployment mapping vessels (RDMV) which have been custom designed to be launched by crane when conventional road trailer launching is not possible. The iLinks RDMV's are fitted with the latest above and below the water 3D survey systems and are maintained in a fully calibrated ready to deploy

state at all times. The most difficult part of the whole operation was backing the trailer across the narrow ramp onto the crane barge. Once the vessel was within the reach of the crane, Port Ship Services lifted the RDMV off its trailer and lowered it into the river, effortlessly.

The survey mission went flawlessly and in a matter of hours the boat was safely back on its trailer and the survey team were on their way back to Houston Texas to bring the New Year in.

## Contact information

iLinks Geosolutions LLC maintain a fully operational, calibrated and ready-to-go RDMV in their Katy, Texas facility at all times. For more information on iLinks range of products and services visit [www.ilinks.us](http://www.ilinks.us), or call +1 (281) 665 3954. Watch the launch and recovery video clip at <https://youtu.be/2kTpXMidBU>

